

## SPEC SHEET + MEASUREMENTS



Nike Club Fleece Sleeve Swoosh Full-Zip Hoodie.

NKDR1513

### Product photo



This brushed-back fleece hoodie is where comfort meets street-ready Nike style.

- 8.2-ounce, 80/20 cotton/polyester
- Jersey-lined, three-panel hood with dyed-to-match drawcords
- Dyed-to-match zipper
- Charcoal Heather has anthracite drawcords and zipper
- Front pockets
- Rib knit cuffs and hem
- Contrast embroidered Swoosh logo on left sleeve

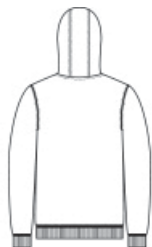
### CARE INSTRUCTIONS

Machine Wash Cold (30C). Wash Inside Out. Wash With Like Colors. Do Not Use Softeners. Do Not Use Bleach. Tumble Dry Low. Do Not Iron. Do Not Dry Clean.

### Sketches



front



back

# SPEC SHEET + MEASUREMENTS



Nike Club Fleece Sleeve Swoosh Full-Zip Hoodie.

NKDR1513

## PRODUCT MEASUREMENTS

	XS	S	M	L	XL	2XL	3XL	4XL
Chest	20	21 1/2	23 1/4	24 3/4	26 3/4	28 3/4	30 3/4	32 5/8
Body Length at Back	26 3/8	26 3/4	27 1/8	28	28 3/4	29 1/2	30 1/4	31 1/8
Sleeve Length from Center Back	34 1/4	34 7/8	35 1/2	35 7/8	36 5/8	37 3/8	38 1/8	38 3/4

**Chest:** Measured across the chest one inch below armhole when laid flat.

**Body Length at Back:** Measured from high point shoulder to finished hem at back.

**Sleeve Length from Center Back:** Measure from Center Back neck to shoulder point to sleeve hem.

## SIZE CHARTS

	XS	S	M	L	XL	2XL	3XL	4XL
Chest	32-35	35-37 1/2	37 1/2-41	41-44	44-48 1/2	48 1/2 -53 1/2	53 1/2 - 58	58-63

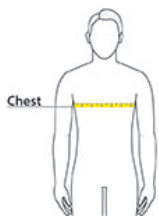
# SPEC SHEET + MEASUREMENTS



Nike Club Fleece Sleeve Swoosh Full-Zip Hoodie.  
NKDR1513

## HOW TO MEASURE

---



### CHEST

Measure under the arm and around the fullest part of the chest with arms down, keeping tape horizontal.

## COLORS

---



Black  
PMS BLACK  
C



Charcoal  
Heather  
PMS 425C



Dark Grey  
Heather  
PMS 422C



Midnight Navy  
PMS 2767C



University Red  
PMS 200C



White